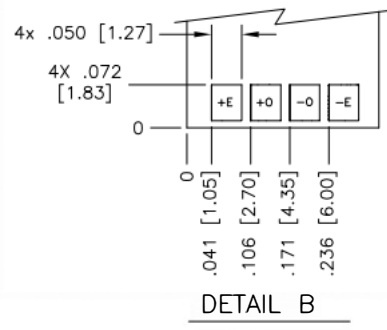
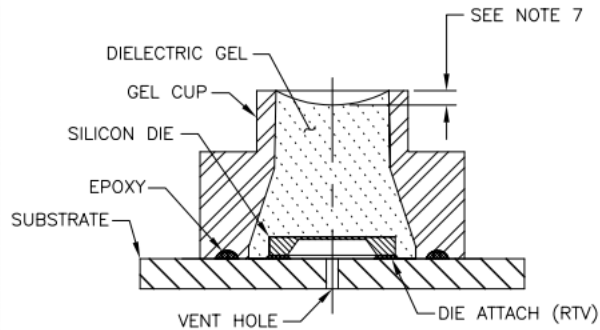
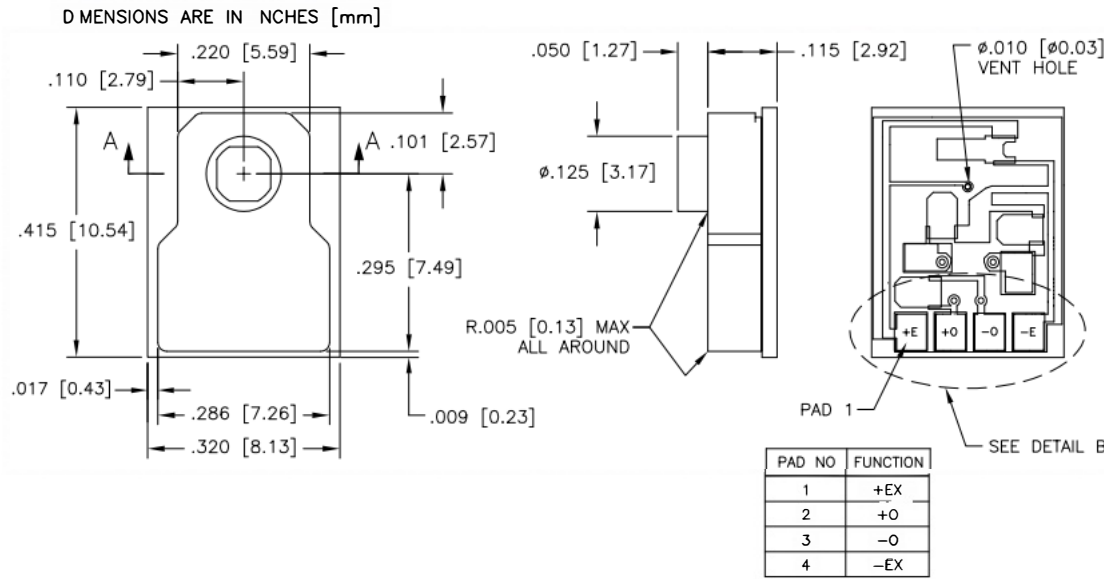


THIS DRAWING AND THE INFORMATION CONTAINED HEREIN IS THE PROPERTY OF SENSORALL AND SHALL NOT BE USED, REPRODUCED, PUBLISHED OR DISCLOSED TO OTHERS WITHOUT THE EXPRESS WRITTEN CONSENT OF SENSORALL

AMBIENT TEMPERATURE: 23°C (UNLESS OTHERWISE SPECIFIED)

PARAMETERS	MIN	TYP	MAX	UNITS	NOTES
OPERATING PRESSURE RANGE	-50	-	5171.5	mmHg	
OVERPRESSURE	150	-	-	PSI	
ZERO PRESSURE OFFSET	1	-	7	mmHg	
SENSITIVITY	-50 TO 300 mmHg	4.95	5.05	uV/V/mmHg	
	5.8 TO 30 PSI	4.9	5.0	uV/V/mmHg	
	30 TO 60 PSI	4.8	5.0	uV/V/mmHg	
	60 TO 100 PSI	4.5	4.8	uV/V/mmHg	
LINEARITY & HYSTERESIS (-30 TO 100 mmHg)	-	-	1	mmHg	1
LINEARITY & HYSTERESIS (>100 TO 200 mmHg)	-	-	1	% OUTPUT	1
LINEARITY & HYSTERESIS (>200 mmHg)	-	-	1.5	% OUTPUT	1
INPUT IMPEDANCE	1K	-	3.2K	Ω	
OUTPUT IMPEDANCE	285	300	315	Ω	
OUTPUT SYMMETRY	0.95	-	1.05	RATIO	2
SUPPLY VOLTAGE	2	6	10	VDC or VAC RMS	
RISK CURRENT (@ 120 VAC RMS 60 Hz)	-	-	2	uA	
WARM-UP TIME	-	5	-	SECONDS	
FREQUENCY RESPONSE	-	1200	-	Hz	
OFFSET DRIFT	-	-	2	mmHg	3
THERMAL SHIFT, SPAN (10°C TO 40°C)	-	-	±0.1	%/°C	4
THERMAL SHIFT, OFFSET (10°C TO 40°C)	-	-	±0.3	mmHg/°C	4
PHASE SHIFT (@ 5 kHz)	-	-	5	DEGREES	
LIGHT SENSITIVITY (3000 FOOT CANDLE)	-	-	1	mmHg	
DEFIBRILLATOR WITHSTAND (400 JOULES)	5	-	-	DISCHARGES	5
STERILIZATION (ETO)	3	-	-	CYCLES	6
OPERATING TEMPERATURE RANGE	+10	-	+40	°C	
STORAGE TEMPERATURE RANGE	-25	-	+70	°C	
HUMIDITY (EXTERNAL)	10-90% (NON-CONDENSING)				
OPERATING PRODUCT LIFE	168 HOURS				
SHelf LIFE	5 YEARS				
DIELECTRIC BREAKDOWN	10,000 VDC				
MEDIA INTERFACE	DIELECTRIC GEL				



APPROVAL		
SIGNATURE (CUSTOMER)	PRINT NAME	DATE
SIGNATURE (SENSORALL)	PRINT NAME	DATE

THIRD ANGLE PROJECTION		TITLE			
		SAS5650-N SPEC DRAWING			
APPROVALS	DATE	SIZE	UNIT	DWG NO	REV
DRAWN LZQ	2023-8-18	A4	MM	SA5650	A
CHECKED LZQ	2023-8-18	SCALE			
APPROVED JY	2023-8-18				SHEET 1 OF 2

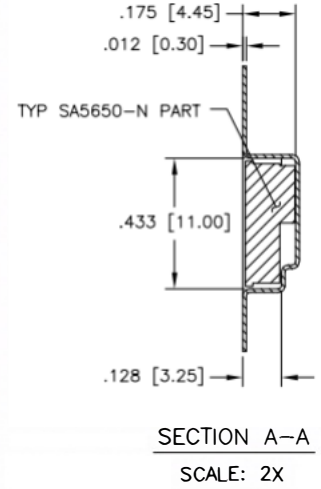
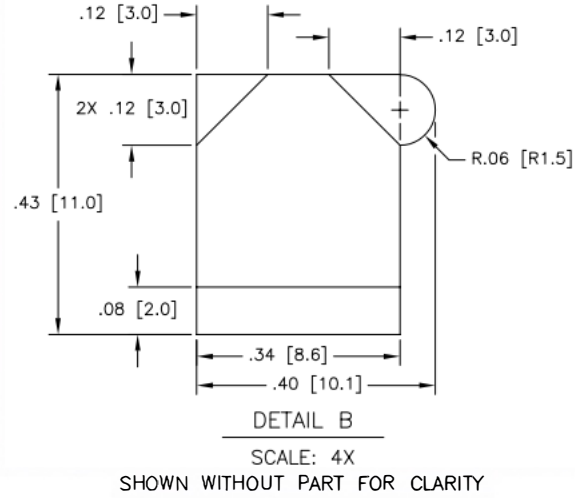
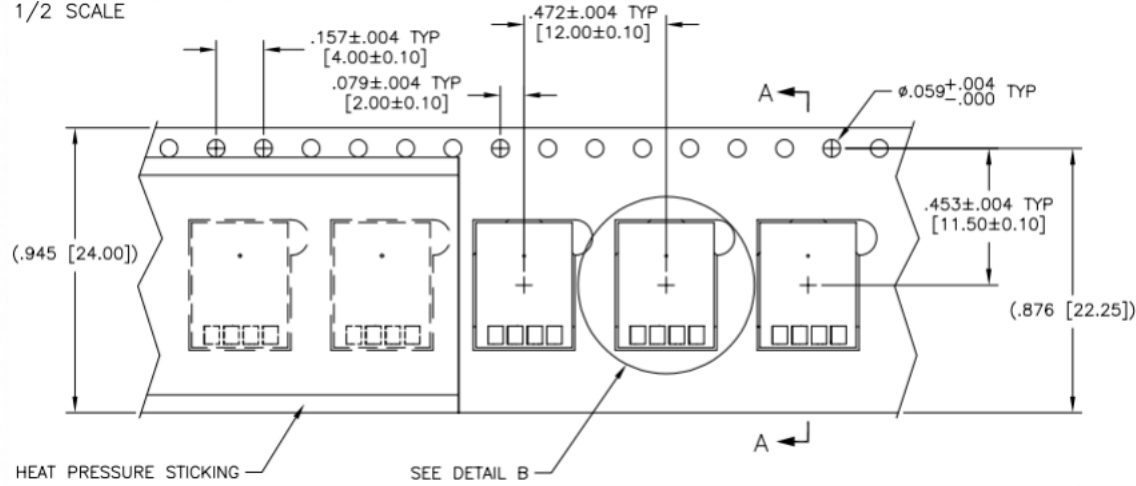
PRODUCT PN SA5650-N

UNLESS OTHERWISE SPECIFIED, ALL DIMENSIONS ON THIS DRAWING ARE IN INCHES [MM] AND SHALL BE INTERPRETED PER ANSI Y14.5M-1982 TOLERANCES ARE AS FOLLOWS:  
 FRACTIONS DECIMALS ANGLES  
 .XX ±.01 ±0.5°  
 .XXX ±.005 ±0.3°  
 MATERIAL: N/A

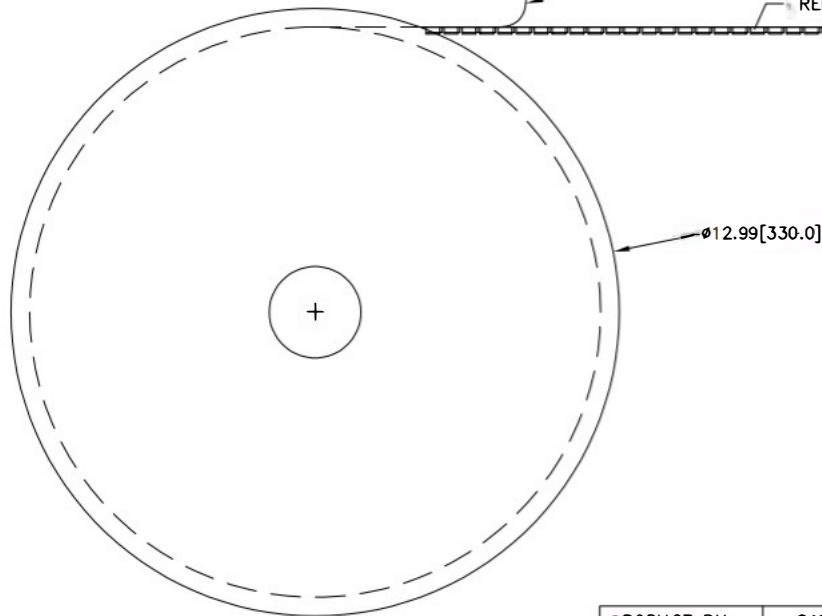
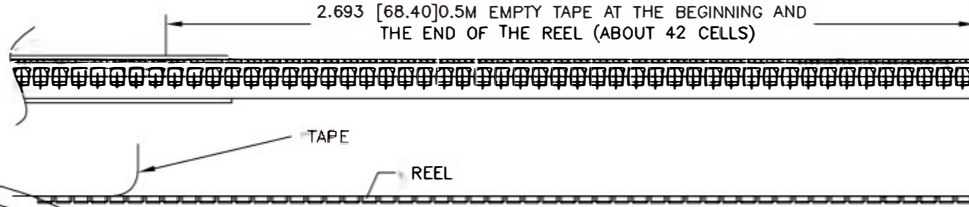
THIS DRAWING AND THE INFORMATION CONTAINED HEREIN IS THE PROPERTY OF SENSORALL AND SHALL NOT BE USED, REPRODUCED, PUBLISHED OR DISCLOSED TO OTHERS WITHOUT THE EXPRESS WRITTEN CONSENT OF SENSORALL

SHIPPING CONFIGURATION: TAPE AND REEL

TAPE SPECIFICATIONS  
1/2 SCALE



REEL SPECIFICATIONS



NOTES: UNLESS OTHERWISE SPECIFIED

- BEST FIT STRAIGHT LINE.
- DEFINED AS COMMON MODE SYMMETRY BETWEEN SIGNAL OUTPUT AND EITHER EXCITATION TERMINAL.
- OVER AN 8 HOUR TIME PERIOD AFTER A 10 MINUTE WARM-UP.
- OVER OPERATING TEMPERATURE RANGE (+10°C TO + 40°C).
- ONE DISCHARGE PER MINUTE PERFORMED BY CUSTOMER.
- STERILIZATION PERFORMED BY CUSTOMER.
- AFTER CURING, MENISCUS OF GEL SHALL BE FLUSH TO  $.035$  [0.89] BELOW SURFACE.
- PACKING:
  - THE PACKAGE CAN BE CUSTOMIZED FOR CARRIER AND TAPE.
  - EACH REEL PACKED WITH MAX 1440 SENSORS, HAVE A DIFFERENT LOT NO.
  - NO BLANK SPACES ON THE TAPE BETWEEN SENSORS.
  - REELS PACKED IN CARTON BOXES. EACH BOX CONTAIN 6 REELS. PACKED IN 2 PE BAGS.

UNLESS OTHERWISE SPECIFIED, ALL DIMENSIONS ON THIS DRAWING ARE IN INCHES(MM) AND SHALL BE INTERPRETED PER ANSI Y14.5M-1982. TOLERANCES ARE AS FOLLOWS: FRACTIONS DECIMALS ANGLES XX ±.01 ±0.5° XXX ±.005 ±0.3°		THIRD ANGLE PROJECTION		TITLE			
MATERIAL:		APPROVALS		DATE		SAS5650-N SPEC DRAWING	
		DRAWN LZQ		2023-8-18		SIZE A4	
		CHECKED LZQ		2023-8-18		UNIT MM	
		APPROVED JY		2023-8-18		DWG NO SA5650	
PRODUCT PN SA5650-N		SCALE		SHEET 2 OF 2		REV A	